

TORPAGO

CASE STUDY

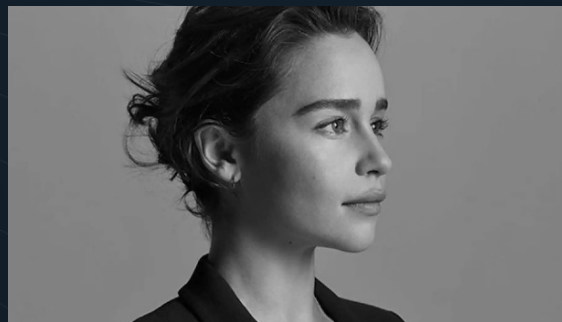


InfiniteWorld

InfiniteWorld is a leading Metaverse Infrastructure platform that navigates brands and creators from all industries into the digital revolution.



CHIBIDINOS



SAMEYOU



MCLAREN



INDUSTRY
Technology,
Information
and Media



LOCATION
Miami,
Florida



56 EMPLOYEES
using Torpago

USED FEATURES

Card
Restrictions

Custom Approval
Workflows

International
Card Issuing

Mobile
Application

Digital Wallets

Accounting
Integration

CASE STUDY

Before Torpago

THE CHALLENGE

Managing spend on software, infrastructure, and marketing became increasingly complex for InfiniteWorld as their customer base and team continued to grow. Additionally, the company's rapid growth introduced new challenges around managing spending for their team. InfiniteWorld previously utilized two separate platforms to combat these challenges: American Express for employee card distribution and Expensify for expense management and reimbursement, spending on average \$130,000 per month. However, they soon realized that balancing two platforms for one key business function was becoming increasingly burdensome and time-consuming, and they worried that employees would have to continue using their own personal credit cards for work, travel, and other miscellaneous business expenses. Fortunately, InfiniteWorld discovered Torpago.

InfiniteWorld

BACKGROUND

InfiniteWorld brings brands and creators into The Metaverse, the combined virtual and physical worlds, through their scalable infrastructure and NFTs of true utility. They leverage the best of blockchain and digital capabilities to create unmatched branded experiences. Doing so allows InfiniteWorld the opportunity to provide brands tools to increase engagement, traceability and authenticity for real world and virtual products, events, and interactive experiences.

An Easy Fix to an Expensive problem

THE SOLUTION

Switching to Torpago has allowed all InfiniteWorld employees to be more responsible with the company money. Torpago allows InfiniteWorld to allocate their company credit limit across multiple departments, making tracking expenses and staying within budget much more effortless. Torpago minimizes the time spent approving and setting up accounts; InfiniteWorld was able to set up departments, user profiles, and expense policies with ease as Torpago employees assisted them with account set up. Shannon Coble, Chief of Staff, shared that "Torpago has been an amazing help to our company as we transitioned to their platform. Onboarding was seamless, and their customer support made themselves available to us to assist in every step of the onboarding process."

All-in-One Finance Tool

FEATURES USED



Card Restrictions

Employing restrictions for specific cards, such as daily spending limits, transaction limits, merchant restrictions, and time-constraints for card spending



Custom Approval Workflows

Setting unique approval workflows across different departments, users, and functions, such as card approvals and transaction review



International Card Issuing

Instantly issuing cards to employees across 5+ countries.



Mobile Applications

Using the Torpago iOS and Android mobile applications to use key features on-the-go, including card approvals, reviewing and submitting transactions, and snapping photos of receipts in real-time



Digital Wallets

Adding physical and virtual cards to Apple Pay® or Google Pay® to make contactless purchases using a mobile device



Accounting Integration

Automatically sync coded charges to QuickBooks online in real-time
International Card Issuing
Issuing cards to their international team in 5+ countries without missing a beat

CASE STUDY

International Remote Work

As a global remote-first company, InfiniteWorld allows their employees to work from anywhere with an internet connection. Having many employees across multiple countries, such as Argentina and the United Kingdom, and not in a centralized location proved difficult for the company at first, since employees from all over needed to make business purchases. Torpago helped alleviate the difficulties of remote work for InfiniteWorld. Gone are the days of tracking down employees for receipts or transaction details; Torpago allows users to remotely review transactions, both on-the-go with our mobile app and at a desktop computer. InfiniteWorld also utilizes virtual cards to immediately issue cards to their users for various business purchases, such as SaaS subscriptions or rideshare. Torpago cards can also be used in a handful of international countries as well, suiting to InfiniteWorld's international user-base. Best of all, there is no need for expense reimbursements since all Torpago users can be issued their own card instead of using their own personal credit card.



Looking Forward

With employees able to use both physical and virtual cards tailored specifically for each user and department, along with the organization being able to set spending rules and expense policies that best suit their desires, InfiniteWorld has found themselves saving precious hours and avoiding tiresome headaches by using Torpago.

“

Now that we've done away with manual reimbursements, wait times for physical cards, and more easily employed the spending restrictions we wanted, we've saved roughly 15 hours each month since using Torpago. That gives our company more time to focus on more important tasks at hand, which is an unbeatable value to us. ”

Thane Tokerud
Financial Controller

Infinite Assets is excited to continue utilizing Torpago for their global workforce, and they are thrilled for their next step in utilizing Torpago's ERP integrations as they switch from Quickbooks Online to NetSuite. Once their migration is complete, InfiniteWorld will employ Torpago's seamless integration to NetSuite, allowing the company to automate their accounting practices and sync journal entry data in real-time.

Torpago strives to continue assisting InfiniteWorld, as well as all customers, support their remote-first work environment and help them scale their business.